

LEAVING NO-ONE BEHIND

Across the globe, governments pledge to **'LEAVE NO ONE BEHIND'**, ensuring a better world in 2030 and setting targets for a sustainable, peaceful and prosperous future for people and the planet. It's an inspiring vision that promises voices will be heard and full participation and genuine democracy, guaranteed. But how will it get done?

The SDGs dedicate two of 17 goals to what we think are fundamental to keeping this promise: promoting **INCLUSIVE AND TRANSPARENT DECISION-MAKING** and **BUILDING GLOBAL PARTNERSHIPS (GOALS 16 and 17)**.

The 2030 Agenda also clearly recognises that **WITHOUT PROGRESS ON LAND RIGHTS, THE SDGS WILL NOT BE ACHIEVED**.

For this reason, all UN Member States agreed to include land as an important element in a number of the Goals.

By creating inclusive spaces and supporting partnerships, the ILC network is able to mobilise its members to have a broad approach to monitoring land-related targets, notably:



SDG 1 TARGET 1.4:
ownership and control over land



SDG 2 TARGET 2.3:
small-scale food producers



SDG 5 TARGET 5.A: women's equal rights to economic resources



SDG 16 TARGET 16.10:
protecting fundamental freedoms of environmental defenders

Creating sustainable policies and initiatives requires multi-layered decision making, coordination and cooperation, with a multitude of stakeholders intervening along the way.¹

SECURING LAND RIGHTS IS THE KEY TO END POVERTY AND BUILD PEACEFUL AND JUST SOCIETIES.

PARTNERSHIPS

FOR **SYSTEMS CHANGE** IN LAND GOVERNANCE

PROVIDING SOLUTIONS

In order to find lasting solutions, it's clear that we cannot work in isolation. That is why *building and strengthening partnerships based on trust* is critical to solving land governance challenges and is at the apex of ILC's approach.

Land governance is a complex issue and the systems we seek to change are deeply rooted in unequal power relations.

With over 20 years of experience and with some trial and error, we know what works. Even in the most challenging and fragile contexts.

We have developed a systematic approach to setting up, monitoring and supporting the success of multi-stakeholder platforms on land governance. This includes direct support to national platforms in 30+ countries and by collaborating in 10+ more countries with member and partner organisations.

Together with Collaborating for Resilience (CoRe), FAO and Welthungerhilfe (WHH), the ILC is coordinating efforts to amplify support by sharing practical solutions to land challenges.

WHERE WE CANNOT REACH – WE WORK TOGETHER



Federal Ministry
for Economic Cooperation
and Development



Irish Aid
Rialtas na hÉireann
Government of Ireland



Government of the Netherlands



Schweizerische Eidgenossenschaft
Confédération suisse
Confederazione Svizzera
Confederaziun svizra
Swiss Agency for Development
and Cooperation SDC

20+
35+

YEARS EXPERIENCE
COUNTRIES ALL OVER THE WORLD

WE KNOW WHAT WORKS!

By building bridges between governments and local communities, ILC strengthens partnerships to find lasting solutions for land governance, where everyone has a seat at the table.

INTERNATIONAL LAND COALITION SECRETARIAT
c/o IFAD, Via Paolo di Dono, 44, 00142 - Rome, Italy
tel. +39 06 5459 2445 fax +39 06 5459 3445
info@landcoalition.org | www.landcoalition.org

FOR MORE INFORMATION
Yonas Mekonen, Global NES
Coordinator, ILC
y.mekonen@landcoalition.org

**INTERNATIONAL
LAND
COALITION**

¹ (cit: Berger, G. & Streurer, R. 2009. 'Horizontal Policy Integration and Sustainable Development: Conceptual remarks and governance examples'. ESDN Quarterly report, June 2009 Lafferty, W.M. 2002. 'Adapting governance practice to the goal of sustainable development'. Available at <http://webs.uvigo.es/dialogos/biblioteca/goals.pdf>)



ACT LOCALLY

- ▶ TRUST BUILDING
- ▶ MEMBER-LED & NATIONALLY-OWNED
- ▶ A SHARED VISION AND JOINT PROGRAMMING

National Engagement Strategies - often referred to as “NES” – are multi-stakeholder platforms set in motion by the International Land Coalition (ILC). They are led by national actors, usually ILC members, to realise the Coalition’s joint goal of people-centred land governance.

NES platforms are helping to simplify and unpack land governance complexities by setting priorities and designing legitimate solutions to the most challenging land-related issues in a country. NES platforms are based on **collaboration and evidence-based policy dialogue and work to bridge the gap between** national and local government, international agencies, the private sector, and civil society, including grassroots organisations representing land users, traditional authorities and academia.

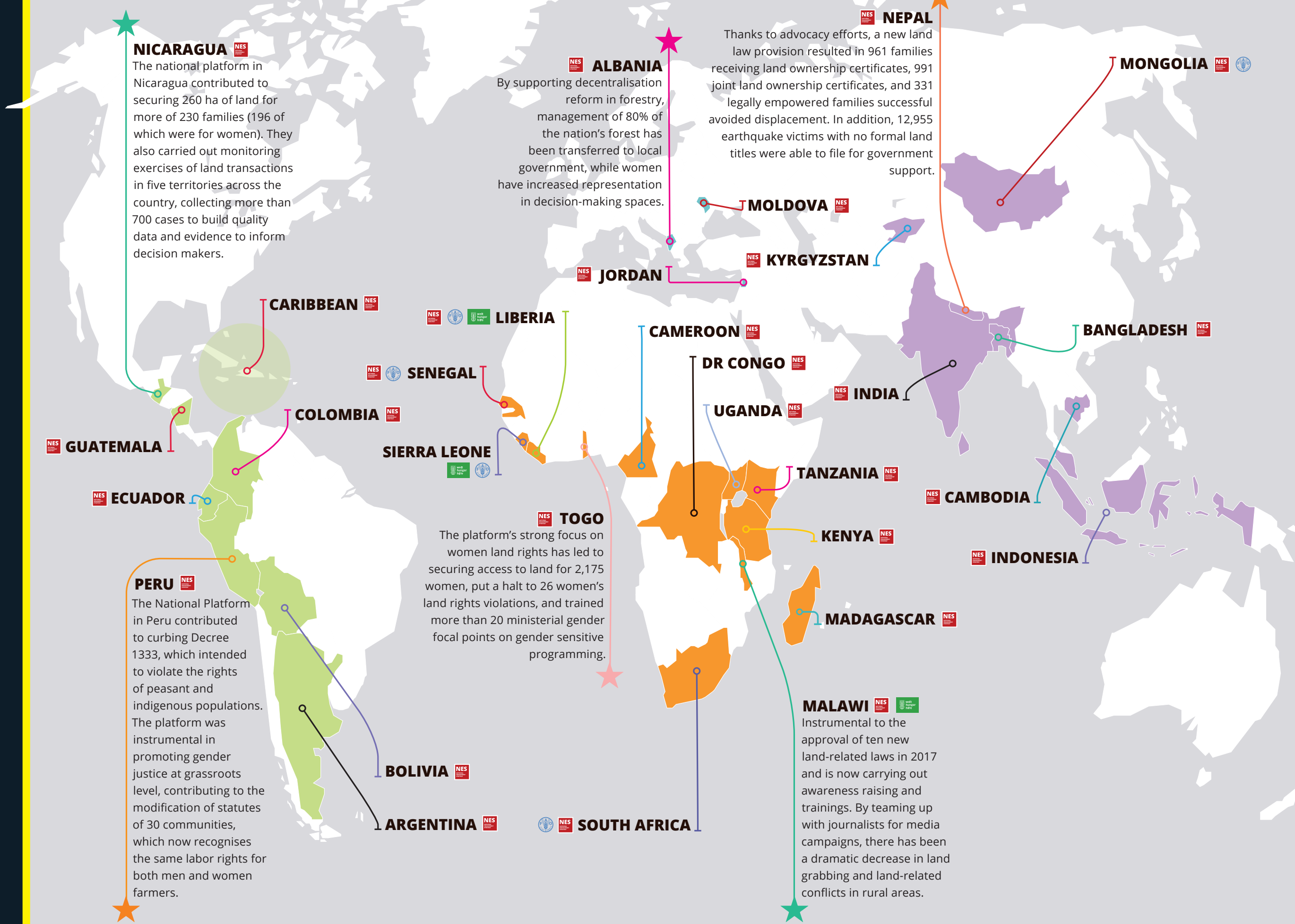
All ILC members have the opportunity to set up national platforms with the technical and financial support of the ILC.

These platforms use ILC’s **10 commitments to people-centred land governance** as their compass, while promoting the Voluntary Guidelines on Tenure (VGGT) and regional norms such as the Framework and Guidelines on Land Policy in Africa.

In some platforms - starting with Nepal, Colombia, Senegal - use LANDex, the global land governance index, to monitor land governance and track SDG land-related indicators and the progress towards these global development frameworks.

- ▶ PROMOTING SOLUTION-ORIENTED PARTNERSHIPS TO IMPROVE LAND GOVERNANCE

PARTNERSHIPS IN ACTION



THINK GLOBALLY

- ▶ STRENGTHENING ALLIANCES & PARTNERSHIPS
- ▶ PROVIDING ACCESS TO SOLUTIONS & LEARNING OPPORTUNITIES
- ▶ SCALING UP WHAT WORKS

Decision makers are increasingly looking to multi-stakeholder platforms to be more effective and responsive to emerging land governance issues, while at the same time, eager to learn about what’s working.

LandCollaborative is helping to do just that by building a global community of practice promoting effective multi-stakeholder platforms for land governance.

By coming together, land governance practitioners, supporters, promoters, funders and change makers are learning from evidenced-based solutions coming out of the ILC network and beyond.

New alliances and partnerships are created through cross-regional exchanges and peer-to-peer learning, leading to better support of multi stakeholder platforms, while elevating their performance and impact.

LEGEND

★

IMPACT STORIES

NES

NATIONAL ENGAGEMENT STRATEGIES

FAO

FAO

WELTHUNGERHILFE

WELTHUNGERHILFE